	File: SOP DPS 27 - Pits Inspection and Maintenance_r1_2014-06-06	
	Environmental Management System	Page 1 of 9


SOP DPS 27

Pits Inspection and Maintenance

Revision List


Revision No.	Description	Written By/ Revised By	Date
0	First issue	K. Agius	16.09.2010
1	<ul style="list-style-type: none"> - Addition of hyperlinks for drawings - Document location updated to reflect current practices - Inclusion of Chemist responsibility 	S. Scicluna / J. Zammit	06.06.2014

Revised by:	Verified by:	Approved by:
[signed] S. Scicluna Environmental Coordinator	[signed] J. Zammit Acting Maintenance Manager DPS	[signed] I. D'Amato Acting DPS Station Manager

	File: SOP DPS 27 - Pits Inspection and Maintenance_r1_2014-06-06	
	Environmental Management System	Page 2 of 9

Contents

1.	Aim and Scope	3
2.	References	3
3.	Terms and Definitions.....	3
4.	Responsibilities	3
5.	Operative Rules.....	4
5.1	Neutralizing Pit Inspection	4
5.2	Neutralizing Pit Inspection Plan	4
5.3	Reporting.....	5
6.	Reference Documents.....	5
	Annex 1	6
	Annex 2	8

	File: SOP DPS 27 - Pits Inspection and Maintenance_r1_2014-06-06	
	Environmental Management System	Page 3 of 9

1. Aim and Scope

The objective of this SOP is to specify detailed rules, times and responsibilities related to the inspection of various pits at Delimara Power Station. All pits are indicated in **Annex 1 - DPS/XZ/84 – Pits and Interceptors**, available on the Enemalta intranet Portal at location:

[Documents/Environmental Management System/Drawings/DPS](#)

This SOP is referred to the Mechanical Maintenance Section at the Delimara Power Station.

2. References

EN ISO 14001:04

3. Terms and Definitions

RE Responsible Engineer – Mechanical Maintenance Engineer

PMO Plant Maintenance Officer

MP Maintenance Personnel


SOP Standard Operating Procedure

DPS Delimara Power Station

4. Responsibilities

Responsible Engineer (RE) – Mechanical Maintenance Engineer

- In coordination with Maintenance Manager and Chemist, schedules dates for cleaning, inspections and maintenance operations as defined in this SOP;
- Carries out inspections and determines works to be performed accordingly;
- Verifies and certifies quality of works on termination;
- Compiles **Annex 2 - Template 27.1 - Pits Inspection and Maintenance Form**

	File: SOP DPS 27 - Pits Inspection and Maintenance_r1_2014-06-06	
	Environmental Management System	Page 4 of 9

Plant Maintenance Officer (PMO)

- Supervises maintenance work carried out on the pits

Chemist

- Confirms that pits are neutralised, where applicable, prior to emptying the pits

Maintenance Personnel (MP)

- Carry out maintenance and checks in accordance with this SOP, under the supervision of the PMO.


5. Operative Rules**5.1 Pit Inspection**

It is the responsibility of RE to ensure that the Boiler Wash-down Pit, D.M. Neutralizing Pit and Acid Storage Dosing Pit, as indicated in **Annex 1 – DPS/XZ/84 – Pits and Interceptors**, are checked on a biennial basis for any leakages that might be present in the bund walls. Any leakages which are identified need to be fixed.

5.2 Pit Inspection Plan

The RE shall co-ordinate with the Maintenance Manager to plan the best dates when the pits can be emptied completely. Once a time window is agreed upon, the RE shall inform the Chemist about this date and shall ascertain that the pit is neutralised, where applicable. Once the pit is neutralised, RE can initiate the process of emptying the pit:

1. Once the water is removed, the bottom sludge can be removed and disposed of as indicated in the **SOP DPS 29 - Waste Management Procedure**.
2. The bund can now be inspected visually for any cracks. If no cracks are identified, the positive result shall be mentioned in **Annex 2 - Template 27.1 - Pits Inspection and Maintenance Form**.

	File: SOP DPS 27 - Pits Inspection and Maintenance_r1_2014-06-06	
	Environmental Management System	Page 5 of 9

3. If any crack is identified, appropriate sealing materials should be used to seal the bund walls.
4. The works carried out shall be described in **Annex 2 - Template 27.1 - Pits Inspection and Maintenance Form**.
5. Repaired cracks are to be recoated with appropriate material.

5.3 Reporting


Annex 2 - Template 27.1 - Pits Inspection and Maintenance Form should be filled in by the RE indicating the extent of damage found in the pits and the materials used to fix the cracks. The original form prepared by the RE is to be handed over to the Maintenance Manager for archiving. A copy of the report is to be maintained by the RE for operational reference.

6. Reference Documents

SOP DPS 29 - Waste Management Procedure

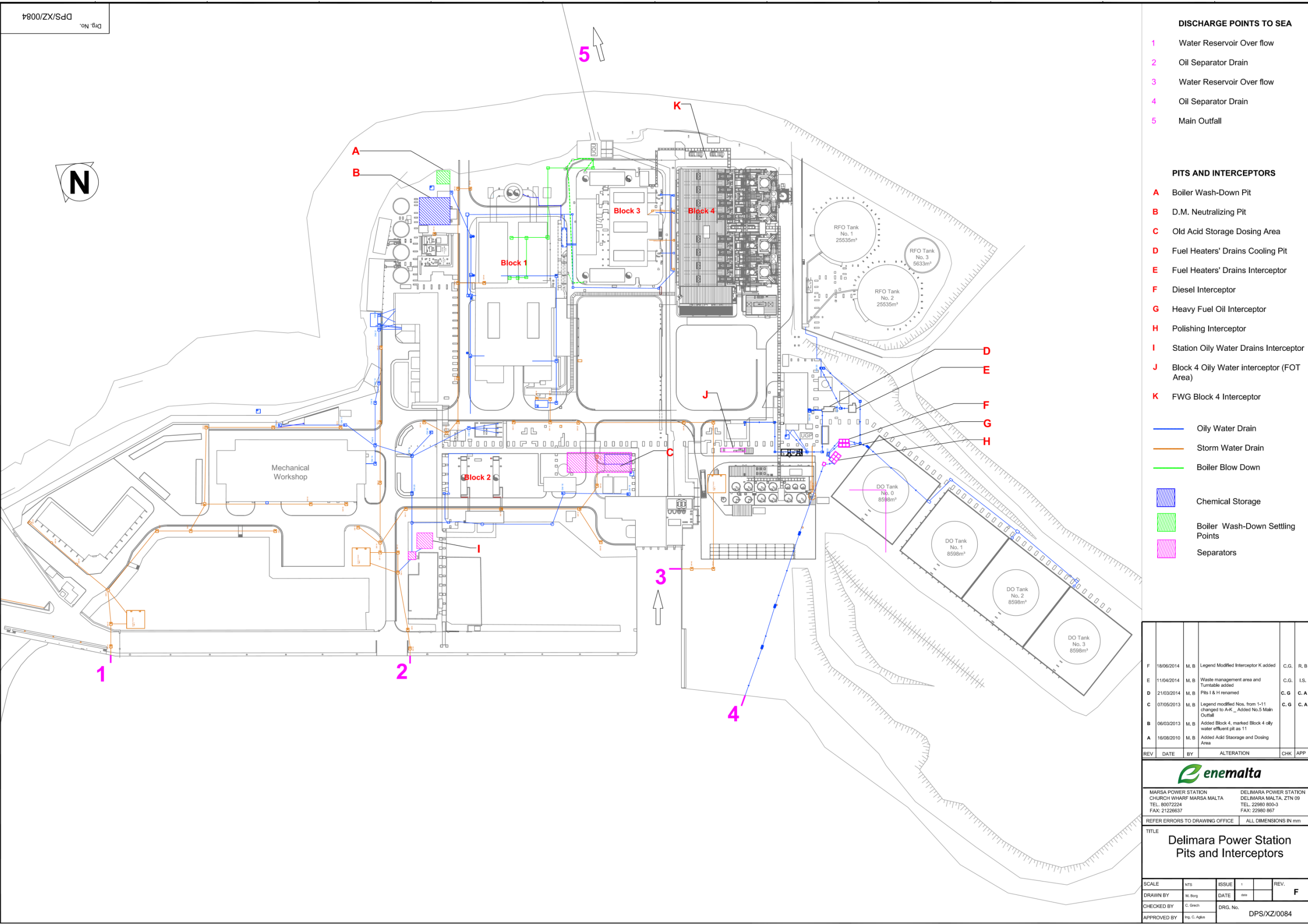
SOP DPS 23 – Oil and Chemical Procurement, Storage and Handling


EP 1 – DPS Emergency Plan

	File: SOP DPS 27 - Pits Inspection and Maintenance_r1_2014-06-06	
	Environmental Management System	Page 6 of 9

Annex 1


Drawing DPS/XZ/84 – Pits and interceptors



	File: SOP DPS 27 - Pits Inspection and Maintenance_r1_2014-06-06	
	Environmental Management System	Page 8 of 9

Annex 2

Template 27.1 – Pit Inspection and Maintenance Form

	File: SOP DPS 27 - Pits Inspection and Maintenance_r1_2014-06-06	
	Environmental Management System	Page 9 of 9

Template 27.1 – Pits Inspection and Maintenance Form

This template is to record the inspection and maintenance of the pits at Delimara Power Station.

Location/Name of Pit (tick from table below)

A. Boiler Wash-down Pit	<input type="checkbox"/>
B. D.M. Neutralising Pit	<input type="checkbox"/>
C. Acid Storage Dosing Pit	<input type="checkbox"/>

Outcome from Inspection:

Works Carried Out (where applicable):

Date: _____

Supervised by: _____
 PMO (in case of Maintenance carried out) Responsible Engineer